

Hardware Options & Styles

ASI 92980

www.wov-in.com

Hardware Options:

Large Split Ring

\$.10(A)

Swivel Snap

\$.20(A)

Swivel Snap & Large Split Ring

\$.30(A)

Standard Bulldog Clip

\$.20(A)

Swivel Bulldog Clip

\$.30(A)

Lobster Claw

\$.40(A)

Snap Clip

\$.40(A)

Heavy Duty Snap

\$.60(A)

Carabiner

\$.90(A)

Swivel Snap & Small Split Ring

\$.26(A)

Rubber O-Ring

\$.20(A)

Small Split Ring

\$.06(A)

Plastic Swivel Snap

\$.50(A)

Plastic Badge Ring

\$.30(A)

Plastic Swivel Bulldog

\$.50(A)

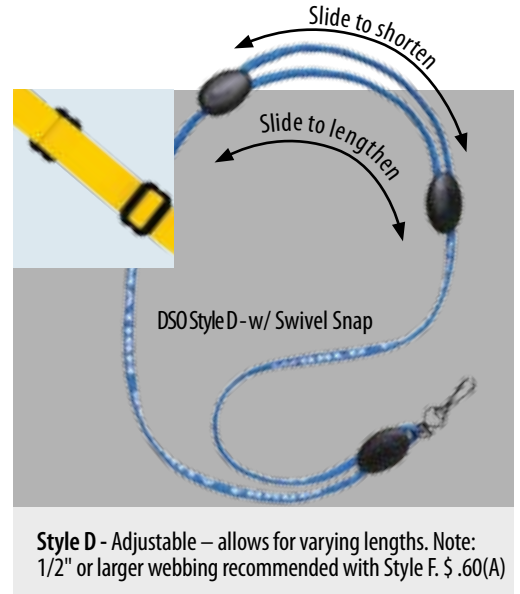
Multi-Purpose Attachment

\$.60(A)

Styles:



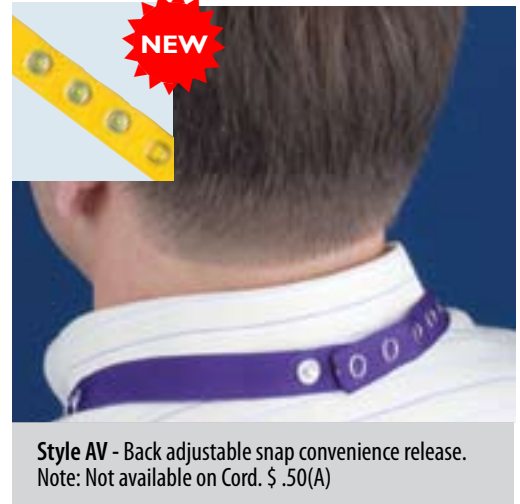
Style E - Back breakaway buckle, convenience release. Note: Not available on Cord and 1" widths. \$.40(A)



Style D - Adjustable – allows for varying lengths. Note: 1/2" or larger webbing recommended with Style F. \$.60(A)



Style C - Back rubber tube, convenience release. Note: Available on DSO, DD0, DS2, DD2, CB0 and CB2 only. \$.30(A)



Style AV - Back adjustable snap convenience release. Note: Not available on Cord. \$.50(A)



Style B - Back hook & loop, convenience release. Note: Not available on Cord. For set-up charge on multi-color webbing see page 82. \$.30(A)



Style F - Front hook & loop, convenience opening. Note: Not available on Cord. For set-up charge on webbing designs see page 82. \$.30(A)